



Government of Rajasthan

**MONTHLY BULLETIN
OF
PRICES
IN
RAJASTHAN**

APRIL, 2021

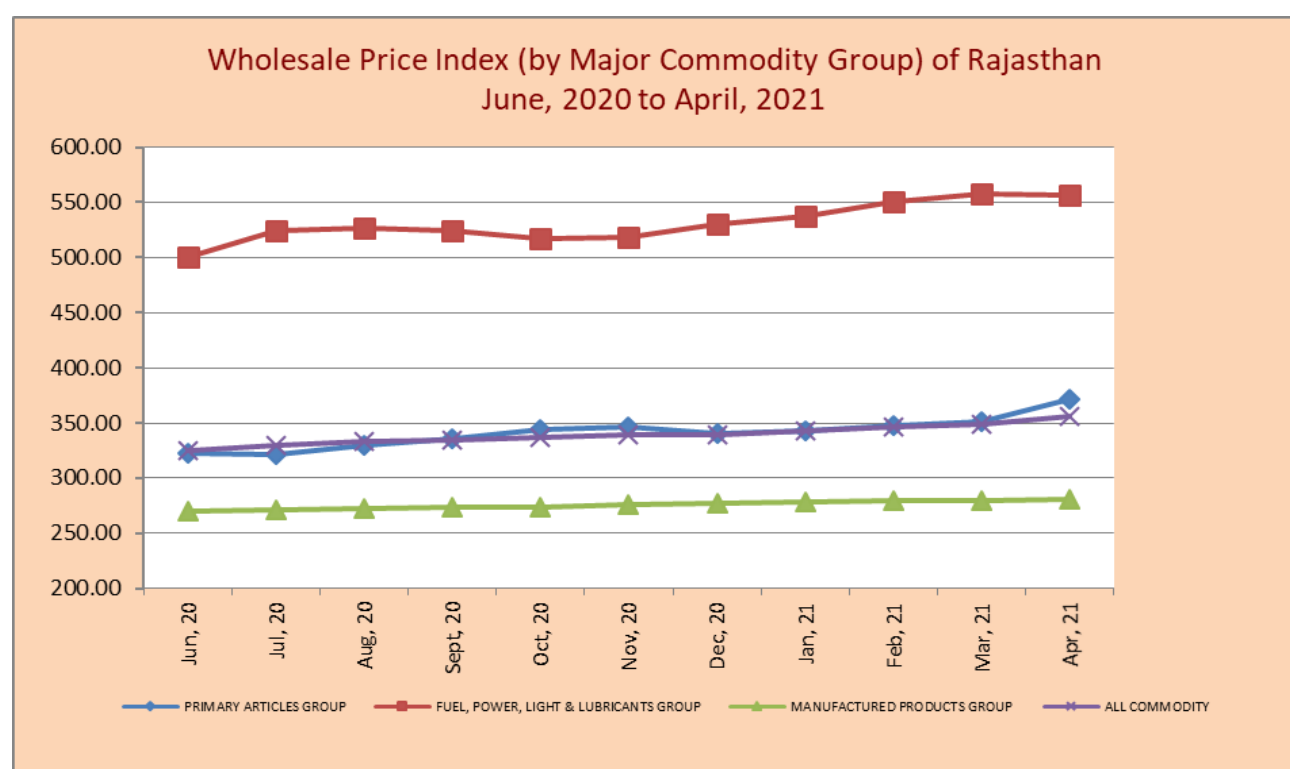
**Department of Economics and Statistics,
Rajasthan, JAIPUR**

WHOLESALE PRICE INDEX IN RAJASTHAN FOR THE MONTH OF APRIL, 2021

INDEX NUMBERS OF WHOLESALE PRICE (WPI) IN RAJASTHAN (Base Year 1999-2000=100)

The General Index of Wholesale Price during APRIL, 2021 stood at 356.24 which was 348.85 in MARCH, 2021 showing an increase of 2.12 percent over preceding month, which is mainly due to an increase in the index of Primary Articles by 5.88 percent and Manufactured Products group by 0.44 percent while the index of Fuel, Power, Light & Lubricants group decreased by 0.23 percent. The details are given in Table No.-1 of this report. The month wise trends are reflected in the diagram given below:

Wholesale Price Index (by Major Commodity Group) of Rajasthan						
for the month of APRIL, 2021						
(Base year 1999-2000=100)						
S. No.	Major Group/Subgroup/ Commodity	Wholesale Price Indices			Percentage Variation during APRIL, 2021 over	
		APRIL	MARCH	APRIL	MARCH	APRIL
		2021	2021	2020	2021	2020
1	2	3	4	5	6	7
1	Primary Articles	371.46	350.84	-	5.88	-
	(A)- Agricultural Articles	370.12	347.27	311.67	6.58	18.75
	(B)- Minerals	381.58	377.82	-	1.00	-
2	Fuel, Power, Light & Lubricants	556.68	557.98	485.40	-0.23	14.68
3	Manufactured Products	280.55	279.32	-	0.44	-
	General Index	356.24	348.85	-	2.12	-



* WPI General index not generated in the month of April & May, 2020 due to covid-19 pandemic

The movement of the index for the various commodity group is summarized below:-

(I) Primary Articles: (weight 33.894)

The Index of Primary Articles group stood at 371.46 in APRIL, 2021 which was 350.84 in MARCH, 2021 registered an increase of 5.88 percent over the preceding month, which is mainly due to an increase in the index of the Agricultural Articles sub-group by 6.58 percent and the index of Minerals sub-group increase by 1.00 percent during the month under review.

(A) Agricultural Articles: The Index of Agricultural Articles sub-group stood at 370.12 in APRIL, 2021 whereas it was 347.27 in MARCH, 2021 showing an increase of 6.58 percent over the previous month. This is mainly due to an increase in the Index of Food Articles sub group by 2.10 percent and Non-Food Articles sub group by 14.59 percent over the previous month. In the Food Articles sub-group, the index of Cereals increased by 3.65 percent, Pulses by 4.97 percent, Fruits by 8.96 percent, Milk by 0.88 percent, Egg, Meat & Fish by 0.68 percent and Other Food Articles by 0.05 percent while the index of Vegetables decreased by 11.01 percent and Condiments & Spices by 0.01 percent during the month under review. In the Non Food Articles sub group, the index of Fibers increased by 1.42 percent and Oil-Seed by 19.56 percent while the index of Other non-food decreased by 1.53 percent during the month under review. (Total 11 sub-Groups)

(B) Minerals: The index of Minerals sub group stood at 381.58 for the month of APRIL, 2021 which was 377.82 for the month of MARCH, 2021 registered an increase of 1.00 percent over the previous month. In the Mineral sub-group the index of Gypsum registered an increase of 1.15 percent, Lead Concentrate by 1.18 percent, Lime Stone by 0.47 percent, Phosphorite by 9.71 percent, Silver by 0.93 percent and Zinc Concentrate by 1.59 percent while the index of five sub group i.e. Copper ore, Steatite (soap stone), Building Stone, Lime Stone (burn) and Brick earth (bricks) remains unchanged during the month under review. (Total 11 sub-Groups)

(II) Fuel, Power, Light & Lubricants' group: (weight 16.253) The index of 'Fuel, Power, Light and Lubricants' group is stood at 556.68 in APRIL, 2021 which was 557.98 in MARCH, 2021 registered a decrease of 0.23 percent over the previous month. This is mainly due to a decrease in the index Sub-Group of Petrol, Diesel & L.P. Gas by 0.38 percent whereas the index of Coal and Electricity sub group remains unchanged during the month under review. (Total 03 sub-Groups)

(III) Manufactured Products Group: (weight 49.853)

The index of Manufactured Products group is stood at 280.55 during the month of APRIL, 2021 which was 279.32 during the month of MARCH, 2021 registered an increase of 0.44 percent over the previous month. In the Manufactured products group the index of sub group of Food Products increased by 1.39 percent, Spinning Weaving & Finishing by 0.02 percent, Non-Metalic & Minerals Products by 0.21 percent, Basic Precious & Ferrous Metals by 0.25 percent and General Purpose Machinery by 0.10 percent while the index of Wood & Wood Products decreased by 0.22 percent, and Chemical by 0.02 percent whereas the index of three items i.e., Beverage & Tobacco, Publishing and Motor Vehicle remain unchanged during the month under review. (Total 10 sub-Groups).

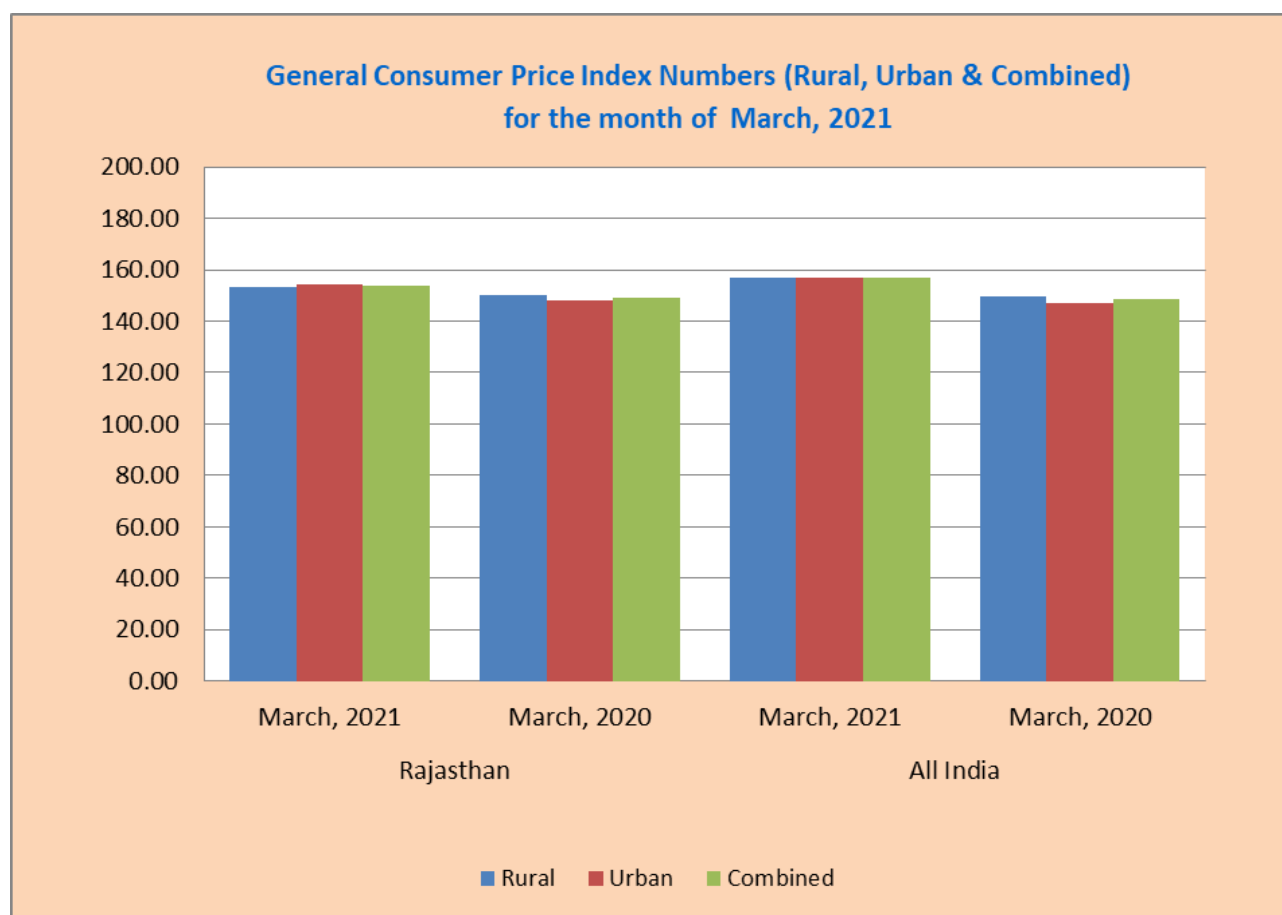
2. Consumer Price Indices

(i) General Consumer Price Index (Rural, Urban & Combined) (Base Year 2012=100)

The Central Statistics Office (CSO), Ministry of Statistics & Programme Implementation releases General Consumer Price Indices (CPI-Rural, Urban & Combined) for all India and States/UT's separately. The General Consumer Price Index of Rajasthan for Rural, Urban and Combined registered an increase of 2.2 percent, 4.3 percent and 2.9 percent respectively in the month of MARCH, 2021 over the same month of previous year. The All India General Consumer Price Index of Rural, Urban and Combined sector registered an increase of 4.6 percent, 6.5 percent and 5.5 percent respectively in the month of MARCH, 2021 over the same month of the previous year.

The Rajasthan General Consumer Price Index for the month of MARCH, 2021 is showing an increase of 2.9 percent with respect of 5.5 percent of All India level over the corresponding month of the last year. The details are as under:-

(Base year 2012=100)							
S. No.	Index for the Month	Rajasthan			All India		
		Rural	Urban	Combined	Rural	Urban	Combined
1	2	3	4	5	6	7	8
1	MARCH, 2021	153.4	154.3	153.7	156.7	156.9	156.8
2	MARCH, 2020	150.1	147.9	149.3	149.8	147.3	148.6
3	Percentage Variations during MARCH, 2021 over MARCH, 2020	2.2	4.3	2.9	4.6	6.5	5.5



(ii) Consumer Price Index for Industrial Workers (Base Year 2016=100)

The consumer price index for industrial workers is an important indicator of the average change in consumption levels of industrial workers in the country. The Consumer Price Index is calculating and released by Labor Bureau, Shimla. At present from the month of September 2020, 88 selected industrially developed centers' index is being released on the new base year 2016=100 in this Series under the Consumer Price Index-IW, which includes Alwar, Bhilwara and Jaipur centres of Rajasthan.

At the Alwar, Bhilwara and Jaipur centre, the index for the month of March, 2021 stood at 116.4, 116.1 and 116.3 respectively, which were 116.3, 115.9 and 115.5 in February, 2021.

All India General Consumer Price index for the month of March, 2021 stood at 119.6 which was 119.0 in the month of February, 2021. The details of the Consumer Price Index are given in Table No-2 of this report.

3. Retail Prices

Retail prices of 39 essential commodities are being collected on a weekly basis from 33 District Headquarters. The prices of 29 commodities have increased whereas 9 commodities have decreased while 1 commodity remain unchanged during the month April, 2021 over the previous month. The prices of Gram increased by 3.51 percent, Rice (Sela) by 0.13 percent, Jowar by 0.26 percent, Maize by 1.04 percent, Atta by 0.24 percent, Moong Dal by 0.27 percent, Urad Dal by 0.18 percent, Arhar Dal by 2.91 percent, Gram Dal by 3.38 percent, Besan by 2.86 percent, Groundnut Oil by 3.65 percent, Mustard Oil by 4.10 percent, Til Oil by 0.47 percent, Rapeseed Oil by 7.32 percent, Vanaspati Ghee by 6.29 percent, Chillies Dry (Whole) by 1.82 percent, Gur by 0.95 percent, Sugar by 0.59 percent, Salt by 0.10 percent, Milk (buff.) by 0.08 percent, Goat Meat by 0.65 percent, Potato by 0.87 percent, Tomato by 5.19 percent, Charcoal by 0.40 percent, Washing Soap by 0.37 percent, Toilet Soap by 0.46 percent, Cigarette by 0.42 percent, Biri by 0.40 percent and Tea Leaf by 1.46 percent during the month under review over preceding month while the prices of Wheat decrease by 0.60 percent, Barley by 1.23 percent, Bajra by 0.84 percent, Ghee (Deshi) by 0.42 percent, Egg (Hen) by 1.01 percent, Onion by 27.58 percent, Okra by 7.27 percent, Firewood by 0.89 percent, and Cooking Gas (L.P.G.) by 0.64 percent whereas the price of Kerosene remain unchanged during the month under review. The details are given in Table No-3 of this report.

Wholesale Price Index (Major Group / Sub-group / Commodity Group) of Rajasthan						
for the month of APRIL, 2021						
(Base year 1999-2000=100)						
Major Group/Subgroup/ Commodity		Wholesale Price Indices			Percentage Variation during APRIL, 2021 over	
		APRIL 2021	MARCH 2021	APRIL 2020	MARCH 2021	APRIL 2020
All Commodity		356.24	348.85	-	2.12	-
(I) Primary Articles		371.46	350.84	-	5.88	-
A	Agricultural Articles	370.12	347.27	311.67	6.58	18.75
A-1	Food Articles	342.65	335.59	319.33	2.10	7.30
	ai Cereals	312.24	301.24	304.52	3.65	2.54
	aii Pulses	403.54	384.44	368.04	4.97	9.65
	bi Fruit	539.59	495.20	369.19	8.96	46.16
	bii Vegetables	284.01	319.15	293.32	-11.01	-3.17
	c Milk	330.56	327.68	320.88	0.88	3.02
	d Eggs, Meat & Fish	400.71	398.02	351.37	0.68	14.04
	e Condiments & Spices	340.70	340.72	303.17	-0.01	12.38
	f Other Food Articles	293.68	293.52	231.87	0.05	26.66
A-2	Non-Food Articles	424.35	370.31	296.54	14.59	43.10
	a Fibers	317.56	313.11	305.10	1.42	4.08
	b Oil-Seed	491.78	411.32	304.17	19.56	61.68
	c Other non-food	254.86	258.81	254.78	-1.53	0.03
B	Minerals	381.58	377.82	-	1.00	-
	1 Copper ore	114.14	114.14	114.14	0.00	0.00
	2 Gypsum	1379.32	1363.60	-	1.15	-
	3 Lead concentrate	490.74	485.02	437.62	1.18	12.14
	4 Lime Stone	259.11	257.91	227.06	0.47	14.12
	5 Phosphorite	248.70	226.69	219.36	9.71	13.38
	6 Silver	859.55	851.64	512.51	0.93	67.71
	7 Steatite (Soap Stone)	367.77	367.77	367.77	0.00	0.00
	8 Zinc Concentrate	337.00	331.72	242.78	1.59	38.81
	9 Building Stone	454.71	454.71	-	0.00	-
	10 Lime Stone (Burn)	194.92	194.92	191.61	0.00	1.73
	11 Brick earth (Bricks)	282.23	282.23	280.21	0.00	0.72
(II) Fuel, Power, Light & lubricants:		556.68	557.98	485.40	-0.23	14.68
	1 Coal	255.50	255.50	241.09	0.00	5.98
	2 Petrol, Diesel & LP Gas	603.48	605.81	477.54	-0.38	26.37
	3 Electricity	538.94	538.94	538.94	0.00	0.00
(III) Manufactured products:		280.55	279.32	-	0.44	-
	A Food Products	356.71	351.81	-	1.39	-
	B Beverage & Tobacco	309.02	309.02	-	0.00	-
	C Spinning Weaving & Finishing	258.55	258.50	-	0.02	-
	D Wood & Wood products	342.60	343.35	-	-0.22	-
	E Publishing	586.67	586.67	493.33	0.00	18.92
	F Chemical	215.94	215.98	-	-0.02	-
	G Non-Metalic & Mineral Products	259.40	258.85	-	0.21	-
	H Basic Precious & Ferrous Metals	353.98	353.11	-	0.25	-
	I General Purpose Machinery	190.33	190.14	-	0.10	-
	J Motor Vehicles	246.15	246.15	-	0.00	-

* WPI General index not generated in the month of April & May, 2020 due to covid-19 pandemic

Consumer Price Index for Industrial Workers of
Alwar, Bhilwara, Jaipur and All India Centres
(Base Year 2016 = 100)

S. No.	Commodity Group	ALWAR		Percentage variation during Mar.,21 over Feb.,21	BHILWARA		Percentage variation during Mar.,21 over Feb.,21	JAIPUR		Percentage variation during Mar.,21 over Feb.,21	ALL INDIA		Percentage variation during Mar.,21 over Feb.,21
		MARCH	FEBRUARY		MARCH	FEBRUARY		MARCH	FEBRUARY		MARCH	FEBRUARY	
		2021	2021		2021	2021		2021	2021		2021	2021	
1.	Food & Beverages	115.0	115.4	-0.35	109.6	109.7	-0.09	119.2	117.5	1.45	118.0	117.9	0.08
2.	Pan,Supari, Tobacco and Intoxicants	134.4	136.2	-1.32	123.3	123.3	0.00	129.6	128.8	0.62	136.5	135.8	0.52
3	Clothing & Footwear	115.7	115.7	0.00	124.4	124.4	0.00	114.3	114.3	0.00	118.7	118.4	0.25
4.	Housing	111.7	111.7	0.00	113.5	113.5	0.00	109.4	109.4	0.00	115.2	115.2	0.00
5	Fuel & Light	149.9	146.6	2.25	146.9	143.3	2.51	134.1	132.2	1.44	149.2	142.0	5.07
6.	Miscellaneous	111.5	111.1	0.36	118.1	118.2	-0.08	114.1	113.7	0.35	118.1	117.6	0.43
	General Index	116.4	116.3	0.09	116.1	115.9	0.17	116.3	115.5	0.69	119.6	119.0	0.50

Retail Prices of Essential Commodities in Rajasthan on the basis of

Weekly Prices collected from District Headquarters

(Unit: Prices Rs. per Kg.)

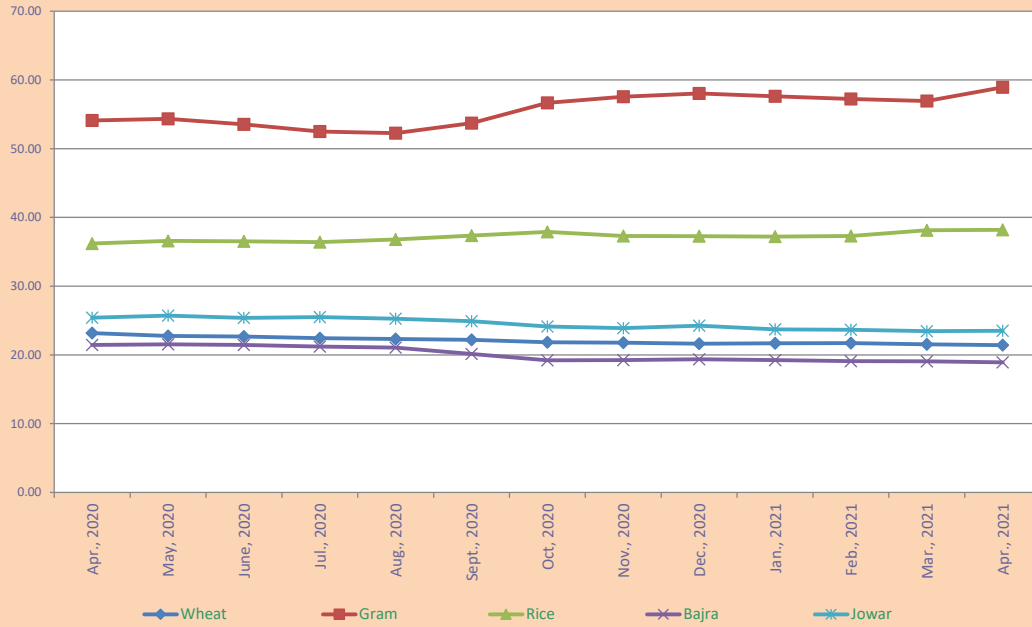
APRIL, 2021

S. No	Commodities	Unit	Average Monthly Prices			Percentage variation during APRIL, 2021 over	
			APRIL	MARCH	APRIL	MARCH	APRIL
			2021	2021	2020	2021	2020
1	2	3	4	5	6	7	8
1	Wheat	KG	21.42	21.55	23.17	-0.60	-7.55
2	Barley	KG	19.30	19.54	22.05	-1.23	-12.47
3	Gram	KG	58.93	56.93	54.10	3.51	8.93
4	Rice (Sela)	KG	38.20	38.15	36.21	0.13	5.50
5	Bajra	KG	18.92	19.08	21.46	-0.84	-11.84
6	Jowar	KG	23.52	23.46	25.41	0.26	-7.44
7	Maize	KG	22.27	22.04	25.54	1.04	-12.80
8	Atta	KG	25.41	25.35	26.88	0.24	-77.38
9	Moong dal (Without husk)	KG	105.88	105.60	112.34	0.27	-3.86
10	Urad dal (Without husk)	KG	109.12	108.92	110.13	0.18	10.46
11	Arhardal	KG	108.83	105.75	98.79	2.91	#REF!
12	Gram dal	KG	68.83	66.58	63.16	3.38	8.98
13	Besan	KG	74.77	72.69	68.75	2.86	8.76
14	Groundnut Oil	KG	175.01	168.84	144.07	3.65	21.48
15	Mustard Oil	KG	149.92	144.02	110.63	4.10	35.51
16	Til Oil	KG	227.39	226.32	214.39	0.47	6.06
17	Rapeseed Oil	KG	135.68	126.43	99.73	7.32	36.05
18	Vanaspati Ghee (p.Ltr.)	LTR.	111.20	104.62	86.05	6.29	29.23
19	Ghee (deshi)	KG	632.10	634.78	634.18	-0.42	-0.33
20	Chillies dry (Whole)	KG	208.58	204.86	189.12	1.82	10.29
21	Gur	KG	39.39	39.02	40.78	0.95	-3.41
22	Sugar	KG	37.33	37.11	38.79	0.59	-3.76
23	Salt	KG	19.93	19.91	19.26	0.10	3.48
24	Milk (Buff.) (p.Ltr.)	LTR.	51.30	51.26	50.34	0.08	1.91
25	Egg (Hen) Each	EACH	5.91	5.97	5.52	-1.01	7.07
26	Goat Meat	KG	470.06	467.01	414.77	0.65	13.33
27	Potato	KG	17.33	17.18	22.11	0.87	-21.62
28	Onion	KG	24.18	33.39	25.81	-27.58	-6.32
29	Tomato	KG	22.90	21.77	23.66	5.19	-3.21
30	Okra	KG	56.27	60.68	44.24	-7.27	27.19
31	Charcoal	5 KG	141.38	140.81	129.71	0.40	9.00
32	Firewood	5 KG	39.91	40.27	39.31	-0.89	1.53
33	Kerosene Oil (p.Ltr.)	LTR.	32.80	32.80	28.40	0.00	15.49
34	Washing Soap (Wheel Green 250 gms.)	PER CAKE	13.57	13.52	13.45	0.37	0.89
35	Toilet Soap (p. Cake) (Lux 100 gms.)	PER CAKE	21.68	21.58	21.65	0.46	0.14
36	Cigarette (Packet of 10)	10 CIGARATE PER PKT.	78.93	78.60	-	0.42	#VALUE!
37	Biri (Bundle of 25)	25 BIDIPER BUNDAL	22.49	22.40	-	0.40	#VALUE!
38	Tea Leaf (245gms)	245 GRAM	122.12	120.36	96.44	1.46	26.63
39	Cooking Gas (L.P.G.) 14.2 Kg. Refill	PER CYLINDER 14.2 KG.	827.92	833.29	589.29	-0.64	40.49

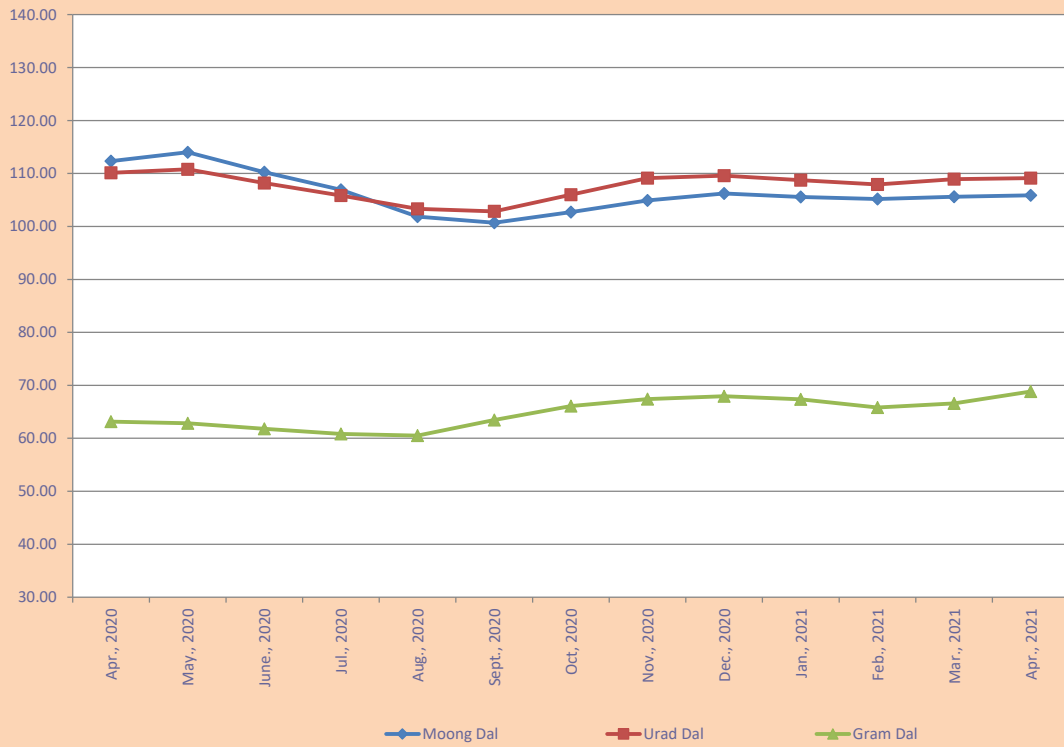
TRENDS IN RETAIL PRICES OF ESSENTIAL COMMODITIES (Monthly Average Prices)

APRIL, 2020 TO APRIL, 2021

TRENDS IN RETAIL PRICES OF CEREALS



TRENDS IN RETAIL PRICES OF PULSES



TRENDS IN RETAIL PRICES OF ESSENTIAL COMMODITIES (Monthly Average Prices) APRIL, 2020 TO APRIL, 2021

