



Government of Rajasthan

**MONTHLY BULLETIN
OF
PRICES
IN
RAJASTHAN**

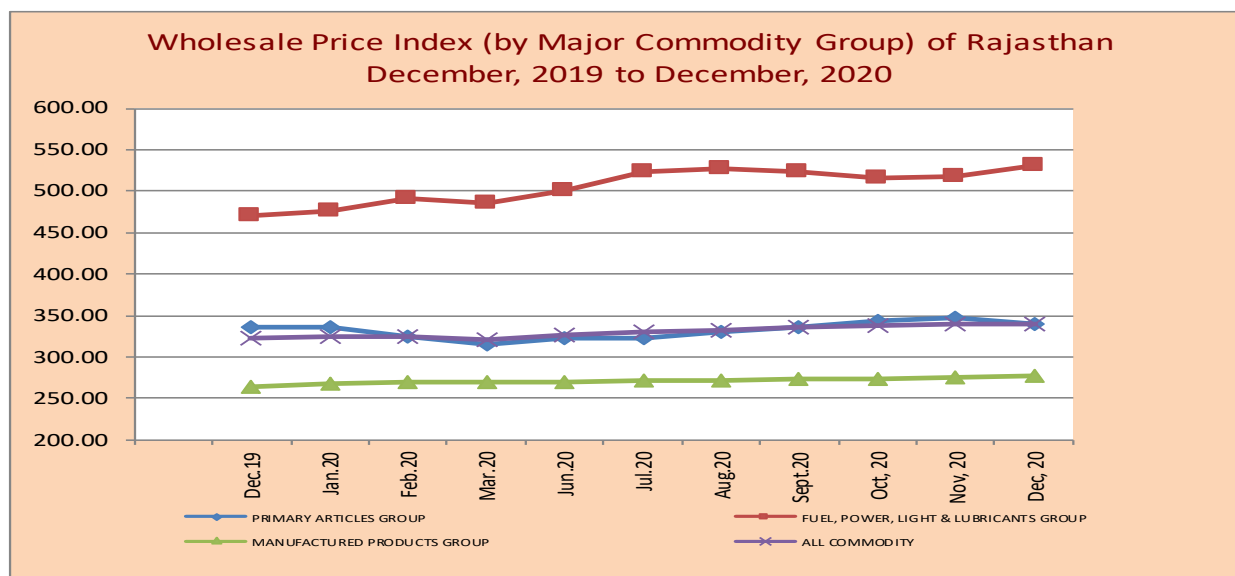
DECEMBER, 2020

**Department of Economics and Statistics,
Rajasthan, JAIPUR**

WHOLESALE PRICE INDEX IN RAJASTHAN FOR THE MONTH OF DECEMBER, 2020

1. INDEX NUMBERS OF WHOLESALE PRICE (WPI) IN RAJASTHAN (Base Year 1999-2000=100)

The General Index of Wholesale Price during DECEMBER, 2020 stood at 339.68 which was 339.23 in NOVEMBER, 2020 showing an increase of 0.13 percent over preceding month, which is mainly due to an increase in the index of Fuel, Power, Light & Lubricants group by 2.30 percent and Manufacture Product group by 0.45 percent while the index of Primary Articles decrease by 1.79 percent. The details are given in Table No.-1 of this report. The month wise trends are reflected in the diagram given below:



* WPI General index not generated in the month of April & May, 2020 due to covid-19 pandemic

(II) Primary Articles: (weight 33.894)

The Index of Primary Articles group stood at 340.21 in DECEMBER, 2020 which was 346.42 in NOVEMBER, 2020 registered a decrease of 1.79 percent over the preceding month, which is mainly due to a decrease in the index of the Agricultural Articles sub-group by 2.24 percent while the index of Minerals sub-group increase by 1.38 percent during the month under review.

(A) Agricultural Articles: The Index of Agricultural Articles sub-group stood at 336.47 in DECEMBER, 2020 whereas it was 344.18 in NOVEMBER, 2020 showing a decrease of 2.24 percent over the previous month. This is mainly due to a decrease in the Index of the Food Articles sub group by 2.36 percent and Non-Food Articles sub group of 2.02 percent over the previous month. In the Food Articles sub-group, the index of Pulses decrease by 1.45 percent, Vegetable by 40.51 percent, Milk by 1.37 percent and Condiments & Spices by 1.45 percent while the index of Cereals increase by 0.25 percent, Fruit by 8.86 percent, Eggs, Meat & Fish by 0.86 percent and Other Food Articles by 8.85 percent during the month under review. In the Non Food Articles sub group, the index of Oil seed decrease by 2.71 percent and Other non-food by 1.41 percent while the index of Fibers increase by 0.87 percent during the month under review. (Total 11 sub-Groups)

(B) Minerals: The index of Minerals sub group stood at 368.45 for the month of December, 2020 which was 363.42 for the month of November, 2020 registered an increase of 1.38 percent over the previous month. In the Mineral sub-group the index of Lead concentrate registered an increase of 6.47 percent, Lime Stone by 5.62 percent, Silver by 1.93 percent, Zinc concentrate by 4.11 percent and Building stone by 0.04 percent while the index of six sub group i.e. Copper ore, Gypsum, Phosphorite, Steatite (soap stone), Lime Stone (burn) and

Brick earth (bricks) remains unchanged during the month under review. (Total 11 sub-Groups)

(II) Fuel, Power, Light & Lubricants' group: (weight 16.253) The index of 'Fuel, Power, Light and Lubricants' group is stood at 530.32 in December, 2020 which was 518.39 in November, 2020 registered an increase of 2.30 percent over the previous month. This is mainly due to an increase in the index Sub-Group of Petrol, Diesel & L.P. Gas by 3.99 percent whereas the index of Coal and Electricity sub group remains unchanged during the month under review. (Total 03 sub-Groups)

(III) Manufactured Products Group: (weight 49.853)

The index of Manufactured Products group is stood at 277.17 during the month of DECEMBER, 2020 which was 275.93 during the month of NOVEMBER, 2020 registered an increase of 0.45 percent over the previous month. In the Manufactured products group the sub group of Food Product increased by 1.50 percent, Spinning Weaving & Finishing by 0.60 percent and Publishing by 5.26 percent while the index of Wood & Wood Products decrease by 0.76 percent, Chemical by 0.18 percent, Non Metallic & Mineral Products by 0.09 percent, Basic Precious & Ferrous Metals by 0.07 percent, General Purpose Machinery by 0.11 percent and Motor Vehicle by 0.01 percent whereas the index of one item i.e., Beverage & Tobacco remain unchanged during the month under review. (Total 10 sub-Groups).

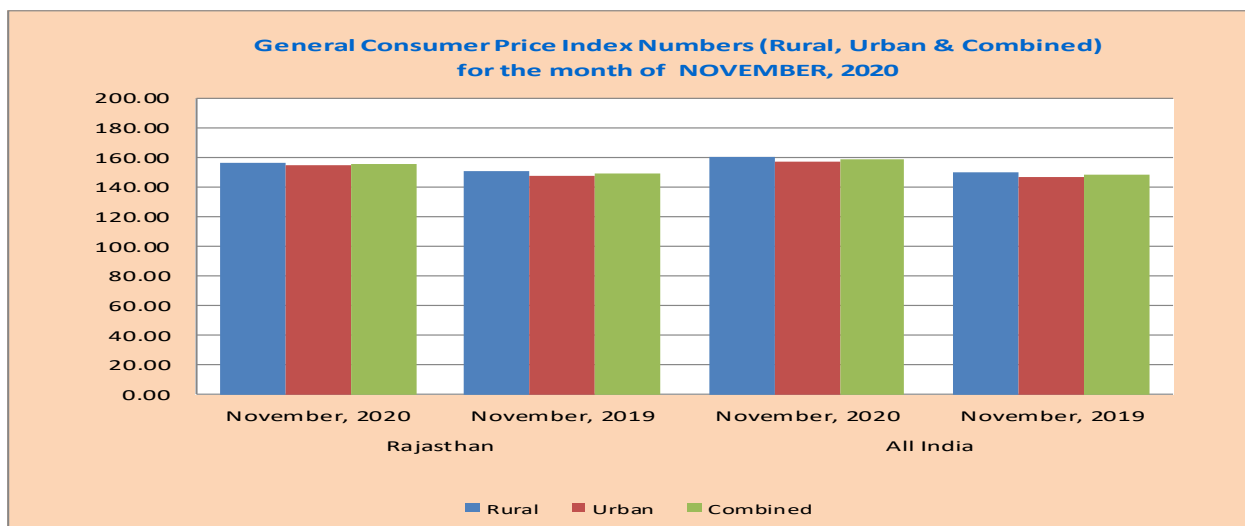
2. Consumer Price Indices

(i) General Consumer Price Index (Rural, Urban & Combined) (Base Year 2012=100)

The Central Statistics Office (CSO), Ministry of Statistics & Programme Implementation releases General Consumer Price Indices (CPI-Rural, Urban & Combined) for all India and States/UT's separately. The General Consumer Price Index of Rajasthan for Rural, Urban and Combined registered an increase of 3.9 percent, 4.5 percent and 4.1 percent respectively in the month of NOVEMBER, 2020 over the same month of previous year. The All India General Consumer Price Index of Rural, Urban and Combined sector registered an increase of 7.2 percent, 6.7 percent and 6.9 percent respectively in the month of NOVEMBER, 2020 over the same month of the previous year.

The Rajasthan General Consumer Price Index for the month of November, 2020 is showing an increase of 4.1 percent with respect of 6.9 percent of All India level over the corresponding month of the last year. The details are as under:-

| (Base year 2012=100) | | | | | | | |
|-----------------------------|---|-----------|-------|----------|-----------|-------|----------|
| S. No. | Index for the Month | Rajasthan | | | All India | | |
| | | Rural | Urban | Combined | Rural | Urban | Combined |
| 1 | 2 | 3 | 4 | 5 | 6 | 7 | 8 |
| 1 | NOVEMBER, 2020 | 156.4 | 154.7 | 155.8 | 160.7 | 156.9 | 158.9 |
| 2 | NOVEMBER, 2019 | 150.5 | 148.0 | 149.6 | 149.9 | 147.0 | 148.6 |
| 3 | Percentage Variations during NOVEMBER, 2020 over NOVEMBER, 2019 | 3.9 | 4.5 | 4.1 | 7.2 | 6.7 | 6.9 |



(ii) Consumer Price Index for Industrial Workers (Base Year 2016=100)

The consumer price index for industrial workers is an important indicator of the average change in consumption levels of industrial workers in the country. The Consumer Price Index is calculating and released by Labor Bureau, Shimla. From the month of September 2020, 88 selected industrially developed centers' index is being released in this Series under the Consumer Price Index-IW (Base Year 2016=100), which includes Alwar, Bhilwara and Jaipur centres of Rajasthan.

At the Alwar, Bhilwara and Jaipur centre, the index for the month of November, 2020 stood at 118.9, 116.3 and 114.2 respectively, which were 117.9, 116.5 and 115.0 in October, 2020.

All India General Consumer Price index for the month of November, 2020 stood at 119.9 which was 119.5 in the month of October, 2020. The details of the Consumer Price Index are given in Table No-3 of this report.

3. Retail Prices

Retail prices of 39 essential commodities are being collected on a weekly basis from 33 District Headquarters. The prices of 26 commodities have increased and 12 have decreased while 1 commodity price remains unchanged under review during the month of December, 2020 over the previous month. The prices of Gram increase by 0.82 percent, Bajra by 0.62 percent, Jowar by 1.46 percent, Moong dal (without husk) by 1.25 percent, Urad dal (without husk) by 0.40 percent, Gram dal by 0.82 percent, Besan by 0.99 percent, Groundnut oil by 1.81 percent, Mustard oil by 3.04 percent, Til Oil by 1.54 percent, Rapeseed oil by 4.19 percent, Vanaspati ghee by 2.50 percent, Ghee (desi) by 0.46 percent, Chilies (Dry Whole) by 1.78 percent, Salt by 0.76 percent, Milk (Buff.) by 0.06 percent, Egg (hen) by 1.77 percent, Meat (goat) by 1.21 percent, Okra by 1.84 percent, Charcoal by 0.54 percent, Firewood by 0.71 percent, Kerosene Oil (ration) by 5.84 percent, Toilet soap by 0.05 percent, Biri by 0.04 percent, Tea (leaf) by 6.89 percent and Cooking gas (LPG) by 12.11 percent during the month under review over preceding month while the prices of Wheat decrease by 0.69 percent, Rice (sela) by 0.03 percent, Maize by 2.26 percent, Atta by 0.23 percent, Arhar dal by 0.26 percent, Gur by 3.05 percent, Sugar by 0.34 percent, Potato by 16.34 percent, Onion by 17.82 percent, Tomato by 20.90 percent, Washing Soap by 1.58 percent and Cigarette by 0.47 percent whereas the prices Barley remains unchanged during the month under review. The details are given in Table No-4 of this report.

Wholesale Price Index (by Major Commodity Group) of Rajasthan**for the month of DECEMBER, 2020**

(Base year 1999-2000=100)

| S. No | All Commodity | Wholesale Price | | | Percentage Variation | |
|-------|---------------------------------|-----------------|---------------|---------------|----------------------------|-------------|
| | Major-Groups/ | Indices | | | during DECEMBER, 2020 over | |
| | Sub-Groups | DECEMBER | NOVEMBER | DECEMBER | NOVEMBER | DECEMBER |
| | | 2020 | 2020 | 2019 | 2020 | 2019 |
| 1 | 2 | 3 | 4 | 5 | 6 | 7 |
| 1 | Primary Articles | 340.21 | 346.42 | 336.21 | -1.79 | 1.19 |
| | (A)- Agricultural Articles | 336.47 | 344.18 | 335.59 | -2.24 | 0.26 |
| | (B)- Minerals | 368.45 | 363.42 | 340.88 | 1.38 | 8.09 |
| 2 | Fuel, Power, Light & Lubricants | 530.32 | 518.39 | 470.56 | 2.30 | 12.70 |
| 3 | Manufactured Products | 277.17 | 275.93 | 264.79 | 0.45 | 4.68 |
| | General Index | 339.68 | 339.23 | 322.44 | 0.13 | 5.35 |

| | | | | Table No : 2 | | | |
|---|------------------------------|---------------------------------|-------------------------|---------------|---------------|----------------------------|--------------|
| Wholesale Price Index (Major Group / Sub-group / Commodity Group) of Rajasthan | | | | | | | |
| for the month of DECEMBER, 2020 | | | | | | | |
| (Base year 1999-2000=100) | | | | | | | |
| Major Group/Subgroup/ Commodity | | | Wholesale Price Indices | | | Percentage Variation | |
| | | | | | | during DECEMBER, 2020 over | |
| | | | DECEMBER | NOVEMBER | DECEMBER | NOVEMBER | DECEMBER |
| | | | 2020 | 2020 | 2019 | 2020 | 2019 |
| All Commodity | | | 339.68 | 339.23 | 322.44 | 0.13 | 5.35 |
| (I) Primary Articles | | | 340.21 | 346.42 | 336.21 | -1.79 | 1.19 |
| A | Agricultural Articles | | 336.47 | 344.18 | 335.59 | -2.24 | 0.26 |
| A-1 | Food Articles | | 323.53 | 331.34 | 346.40 | -2.36 | -6.60 |
| | ai | Cereals | 297.03 | 296.29 | 339.55 | 0.25 | -12.52 |
| | aii | Pulses | 372.97 | 378.47 | 358.64 | -1.45 | 4.00 |
| | bi | Fruit | 229.22 | 210.57 | 262.66 | 8.86 | -12.73 |
| | bii | Vegetables | 426.83 | 717.49 | 828.29 | -40.51 | -48.47 |
| | c | Milk | 327.39 | 331.95 | 335.37 | -1.37 | -2.38 |
| | d | Eggs, Meat & Fish | 394.07 | 390.70 | 378.22 | 0.86 | 4.19 |
| | e | Condiments & Spices | 329.49 | 334.34 | 324.29 | -1.45 | 1.60 |
| | f | Other Food Articles | 272.45 | 250.30 | 231.54 | 8.85 | 17.67 |
| A-2 | Non-Food Articles | | 362.03 | 369.50 | 314.25 | -2.02 | 15.20 |
| | a | Fibers | 327.37 | 324.54 | 315.96 | 0.87 | 3.61 |
| | b | Oil-Seed | 396.57 | 407.60 | 326.63 | -2.71 | 21.41 |
| | c | Other non-food | 253.30 | 256.93 | 259.84 | -1.41 | -2.52 |
| B | Minerals | | 368.45 | 363.42 | 340.88 | 1.38 | 8.09 |
| | 1 | Copper ore | 114.14 | 114.14 | 114.14 | 0.00 | 0.00 |
| | 2 | Gypsum | 1253.93 | 1253.93 | 1056.86 | 0.00 | 18.65 |
| | 3 | Lead concentrate | 503.17 | 472.58 | 456.13 | 6.47 | 10.31 |
| | 4 | Lime Stone | 255.32 | 241.74 | 225.53 | 5.62 | 13.21 |
| | 5 | Phosphorite | 219.36 | 219.36 | 215.69 | 0.00 | 1.70 |
| | 6 | Silver | 805.93 | 790.68 | 574.01 | 1.93 | 40.40 |
| | 7 | Steatite (Soap Stone) | 367.77 | 367.77 | 367.77 | 0.00 | 0.00 |
| | 8 | Zinc Concentrate | 333.07 | 319.93 | 267.75 | 4.11 | 24.40 |
| | 9 | Building Stone | 438.97 | 438.78 | 434.30 | 0.04 | 1.08 |
| | 10 | Lime Stone (Burn) | 194.92 | 194.92 | 185.01 | 0.00 | 5.36 |
| | 11 | Brick earth (Bricks) | 282.23 | 282.23 | 274.65 | 0.00 | 2.76 |
| (II) Fuel, Power, Light & lubricants: | | | 530.32 | 518.39 | 470.56 | 2.30 | 12.70 |
| | 1 | Coal | 255.50 | 255.50 | 241.09 | 0.00 | 5.98 |
| | 2 | Petrol, Diesel & LP Gas | 556.29 | 534.92 | 494.89 | 3.99 | 12.41 |
| | 3 | Electricity | 538.94 | 538.94 | 473.85 | 0.00 | 13.74 |
| (III) Manufactured products: | | | 277.17 | 275.93 | 264.79 | 0.45 | 4.68 |
| | A | Food Products | 342.74 | 337.69 | 307.82 | 1.50 | 11.34 |
| | B | Beverage & Tobacco | 309.02 | 309.02 | 242.78 | 0.00 | 27.28 |
| | C | Spinning Weaving & Finishing | 258.05 | 256.50 | 254.41 | 0.60 | 1.43 |
| | D | Wood & Wood products | 340.35 | 342.94 | 336.23 | -0.76 | 1.23 |
| | E | Publishing | 533.33 | 506.67 | 493.33 | 5.26 | 8.11 |
| | F | Chemical | 215.48 | 215.87 | 210.10 | -0.18 | 2.56 |
| | G | Non-Metallic & Mineral Products | 261.38 | 261.62 | 256.98 | -0.09 | 1.71 |
| | H | Basic Precious & Ferrous Metals | 346.88 | 347.11 | 335.89 | -0.07 | 3.27 |
| | I | General Purpose Machinery | 189.60 | 189.81 | 188.66 | -0.11 | 0.50 |
| | J | Motor Vehicles | 246.11 | 246.13 | 240.09 | -0.01 | 2.51 |

Consumer Price Index for Industrial Workers of

Alwar, Bhilwara, Jaipur and All India Centres

(Base Year 2016 = 100)

| S.No. | Commodity Group | ALWAR | | Percentage variation during Nov.,20 over Oct.,20 | BHILWARA | | Percentage variation during Nov.,20 over Oct.,20 | JAIPUR | | Percentage variation during Nov.,20 over Oct.,20 | ALL INDIA | | Percentage variation during Nov.,20 over Oct.,20 |
|-------|-------------------------------------|----------|---------|--|----------|---------|--|----------|---------|--|-----------|---------|--|
| | | NOVEMBER | OCTOBER | | NOVEMBER | OCTOBER | | NOVEMBER | OCTOBER | | NOVEMBER | OCTOBER | |
| | | 2020 | 2020 | 2020 | 2020 | 2020 | 2020 | 2020 | 2020 | | | | |
| 1. | Food & Beverages | 124.7 | 122.5 | 1.80 | 112.8 | 113.2 | -0.35 | 117.8 | 120.2 | -2.00 | 123.6 | 123.0 | 0.49 |
| 2. | Pan,Supari, Tobacco and Intoxicants | 136.1 | 136.1 | 0.00 | 123.3 | 123.3 | 0.00 | 128.6 | 132.8 | -3.16 | 133.1 | 132.5 | 0.45 |
| 3 | Clothing & Footwear | 115.7 | 115.7 | 0.00 | 124.4 | 124.4 | 0.00 | 111.2 | 111.2 | 0.00 | 117.4 | 117.4 | 0.00 |
| 4. | Housing | 110.4 | 110.4 | 0.00 | 112.2 | 112.2 | 0.00 | 108.7 | 108.7 | 0.00 | 113.5 | 113.5 | 0.00 |
| 5 | Fuel & Light | 124.7 | 123.9 | 0.65 | 128.1 | 128.1 | 0.00 | 116.9 | 116.9 | 0.00 | 126.8 | 126.4 | 0.32 |
| 6. | Miscellaneous | 113.0 | 112.5 | 0.44 | 119.0 | 119.0 | 0.00 | 113.3 | 113.3 | 0.00 | 117.2 | 117.0 | 0.17 |
| | General Index | 118.9 | 117.9 | 0.85 | 116.3 | 116.5 | -0.17 | 114.2 | 115.0 | -0.70 | 119.9 | 119.5 | 0.33 |

Table-4

**Retail Prices of Essential Commodities in Rajasthan on the basis of
Weekly Prices collected from District Headquarters**

(Unit: Prices Rs. per Kg.)

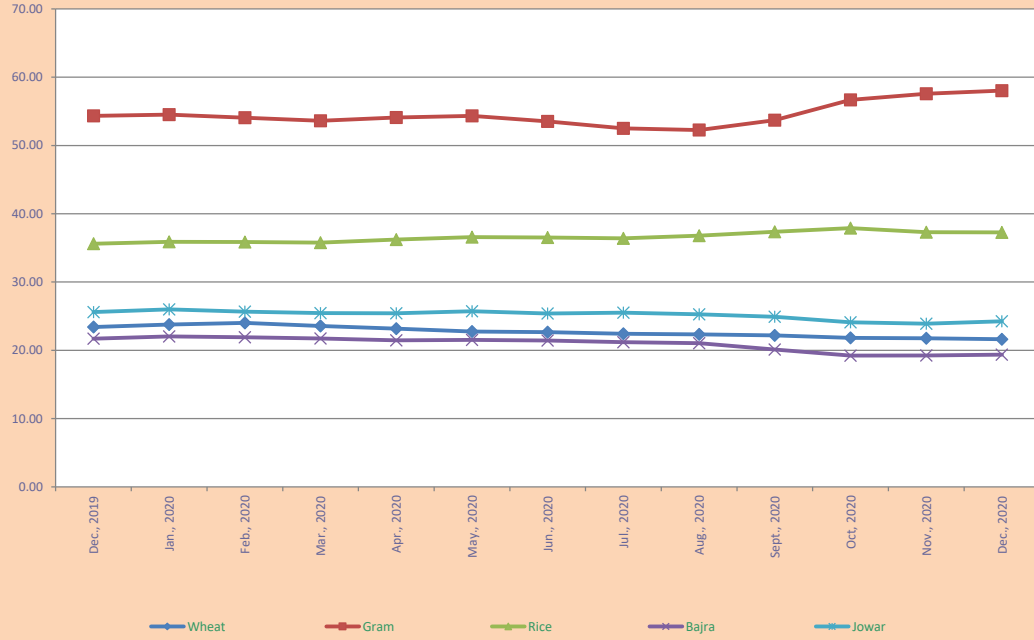
DECEMBER, 2020

| S. No | Commodities | Unit | Average Monthly Prices | | | Percentage variation during DECEMBER, 2020 over | |
|-------|--------------------------------------|-----------------------|------------------------|----------|----------|---|----------|
| | | | DECEMBER | NOVEMBER | DECEMBER | NOVEMBER | DECEMBER |
| | | | 2020 | 2020 | 2019 | 2020 | 2019 |
| 1 | 2 | 3 | 4 | 5 | 6 | 7 | 8 |
| 1 | Wheat | KG | 21.63 | 21.78 | 23.42 | -0.69 | -7.64 |
| 2 | Barley | KG | 19.27 | 19.27 | 22.06 | 0.00 | -12.65 |
| 3 | Gram | KG | 58.04 | 57.57 | 54.33 | 0.82 | 6.83 |
| 4 | Rice (Sela) | KG | 37.28 | 37.29 | 35.61 | -0.03 | 4.69 |
| 5 | Bajra | KG | 19.36 | 19.24 | 21.70 | 0.62 | -10.78 |
| 6 | Jowar | KG | 24.25 | 23.90 | 25.60 | 1.46 | -5.27 |
| 7 | Maize | KG | 23.39 | 23.93 | 26.46 | -2.26 | -11.60 |
| 8 | Atta | KG | 26.07 | 26.13 | 26.26 | -0.23 | -0.72 |
| 9 | Moong dal (Without husk) | KG | 106.23 | 104.92 | 94.39 | 1.25 | 12.54 |
| 10 | Urad dal (Without husk) | KG | 109.58 | 109.14 | 102.81 | 0.40 | 6.58 |
| 11 | Arhardal | KG | 105.74 | 106.02 | 95.08 | -0.26 | 11.21 |
| 12 | Gram dal | KG | 67.94 | 67.39 | 63.08 | 0.82 | 7.70 |
| 13 | Besan | KG | 74.58 | 73.85 | 68.46 | 0.99 | 8.94 |
| 14 | Groundnut Oil | KG | 159.59 | 156.76 | 136.33 | 1.81 | 17.06 |
| 15 | Mustard Oil | KG | 134.17 | 130.21 | 107.20 | 3.04 | 25.16 |
| 16 | Til Oil | KG | 228.16 | 224.69 | 209.17 | 1.54 | 9.08 |
| 17 | Rapeseed Oil | KG | 112.52 | 107.99 | 92.69 | 4.19 | 21.39 |
| 18 | Vanaspati Ghee (p.Ltr.) | LTR. | 92.58 | 90.32 | 80.78 | 2.50 | 14.61 |
| 19 | Ghee (deshi) | KG | 635.88 | 632.98 | 620.10 | 0.46 | 2.54 |
| 20 | Chillies dry (Whole) | KG | 198.83 | 195.35 | 168.15 | 1.78 | 18.25 |
| 21 | Gur | KG | 40.95 | 42.24 | 40.17 | -3.05 | 1.94 |
| 22 | Sugar | KG | 37.95 | 38.08 | 38.03 | -0.34 | -0.21 |
| 23 | Salt | KG | 19.86 | 19.71 | 19.14 | 0.76 | 3.76 |
| 24 | Milk (Buff.) (p.Ltr.) | LTR. | 51.13 | 51.10 | 49.67 | 0.06 | 2.94 |
| 25 | Egg (Hen) Each | EACH | 6.31 | 6.20 | 5.83 | 1.77 | 8.23 |
| 26 | Goat Meat | KG | 453.05 | 447.65 | 414.62 | 1.21 | 9.27 |
| 27 | Potato | KG | 34.16 | 40.83 | 22.06 | -16.34 | 54.85 |
| 28 | Onion | KG | 42.14 | 51.28 | 85.30 | -17.82 | -50.60 |
| 29 | Tomato | KG | 40.31 | 50.96 | 30.63 | -20.90 | 31.60 |
| 30 | Okra | KG | 43.71 | 42.92 | 50.43 | 1.84 | -13.33 |
| 31 | Charcoal | 5 KG | 137.90 | 137.16 | 127.80 | 0.54 | 7.90 |
| 32 | Firewood | 5 KG | 40.89 | 40.60 | 39.58 | 0.71 | 3.31 |
| 33 | Kerosene Oil (p.Ltr.) | LTR. | 29.00 | 27.40 | 37.85 | 5.84 | -23.38 |
| 34 | Washing Soap (Wheel Green 250 gms.) | PER CAKE | 13.73 | 13.95 | 13.18 | -1.58 | 4.17 |
| 35 | Toilet Soap (p. Cake) (Lux 100 gms.) | PER CAKE | 21.93 | 21.92 | 21.77 | 0.05 | 0.73 |
| 36 | Cigarette (Packet of 10) | 10 CIGARATE PER PKT. | 77.77 | 78.14 | 72.45 | -0.47 | 7.34 |
| 37 | Biri (Bundle of 25) | 25 BIDI PER BUNDAL | 22.31 | 22.30 | 20.12 | 0.04 | 10.88 |
| 38 | Tea Leaf (245gms) | 245 GRAM | 112.45 | 105.20 | 95.10 | 6.89 | 18.24 |
| 39 | Cooking Gas (L.P.G.) 14.2 Kg. Refill | PER CYLINDER 14.2 KG. | 685.23 | 611.23 | 566.23 | 12.11 | 21.02 |

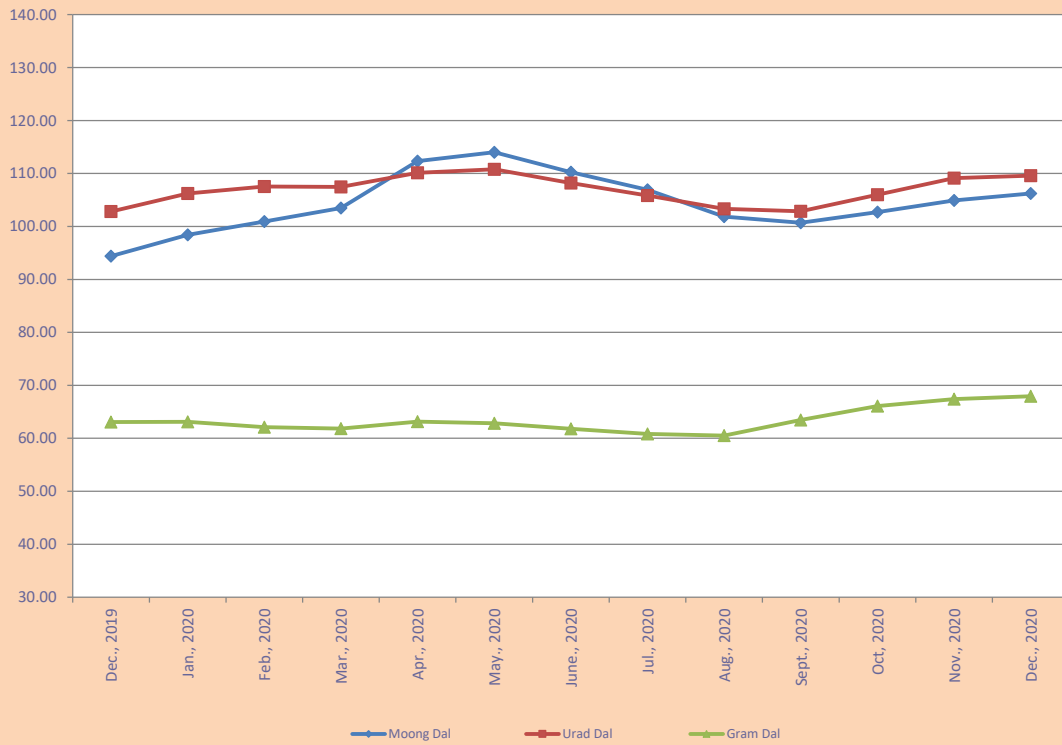
TRENDS IN RETAIL PRICES OF ESSENTIAL COMMODITIES (Monthly Average Prices)

DECEMBER, 2019 TO DECEMBER, 2020

TRENDS IN RETAIL PRICES OF CEREALS



TRENDS IN RETAIL PRICES OF PULSES



TRENDS IN RETAIL PRICES OF ESSENTIAL COMMODITIES (Monthly Average Prices) DECEMBER, 2019 TO DECEMBER, 2020

